

An artistic illustration of two pink flamingos in a lush, green jungle. The flamingo on the left is facing right, while the one on the right is facing left. They are surrounded by various tropical plants, including large green leaves, ferns, and small blue flowers. The background is a textured, light green color. In the top left corner, there is a brown circular badge with the word 'NEW' in white capital letters.

NEW

LICENSING

J

JEHANE

WINTER 2021



Winter Release – February 2021

Welcome to the Winter release of new illustrations and work by Jehane Ltd artists.

I hope you find these an inspiring jumping-off point. We have separate pdf's available dedicated to our new illustrations and patterns.

Enjoy browsing our latest work. Contact me to discuss any ideas and enquire about licensing any of the work in this pdf.

My personal highlights are featured below.

We make art work for you.

JEHANE's HIGHLIGHTS



© Tracey English



© Lee Foster-Wilson



© Kate Heiss



© Bex Parkin



© Meghann Rader



© Amelia Bowman



© Katherine Quinn

We attract commissions and create licenses for clients worldwide.

CONTRIBUTING ARTISTS



Tracey English



Lee Foster-Wilson



Bex Parkin



Meghann Rader



Amelia Bowman



Ali Brookes



Helen Ahpornisiri



Catherine Rowe



Kate Heiss



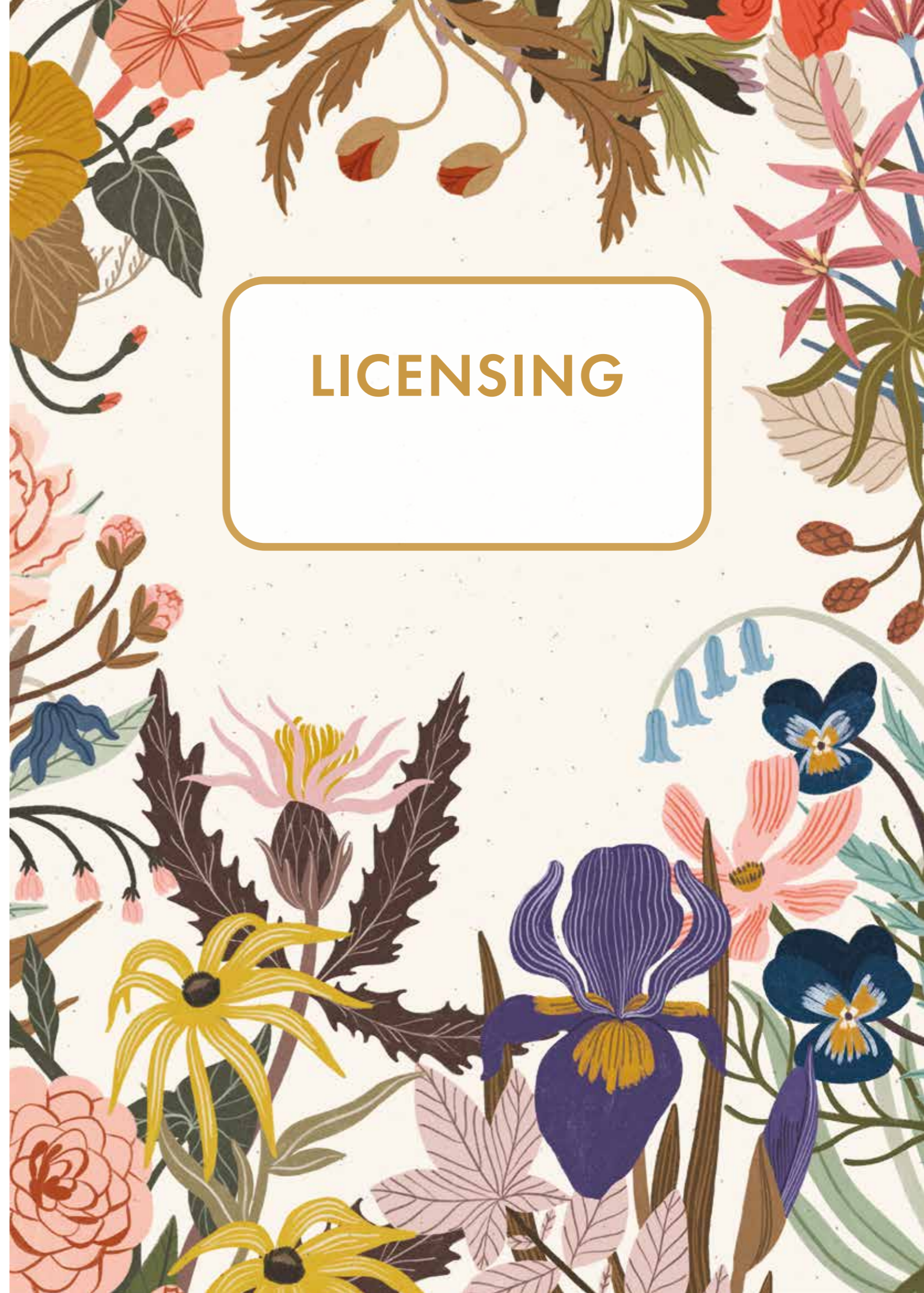
Katherine Quinn



Cover Artist: Caroline Bonne Muller



LICENSING



NEW

EVERYDAY

Amelia Bowman



ENG0357

EVERYDAY

Lee Foster-Wilson



FOS0191-A



FOS0192



FOS0193-A



FOS0193-B



FOS0189 - STYLE GUIDE ONLY

NEW

EVERYDAY

Lee Foster-Wilson



FOS0190

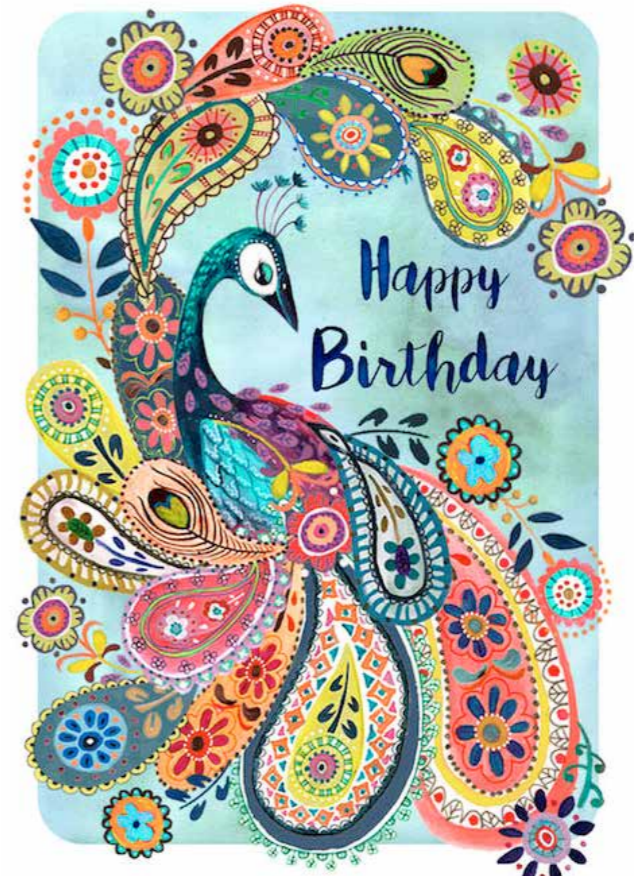
NEW

EVERYDAY

Caroline Bonne Muller



MUL0204



MUL0172-A



MUL0216

NEW

EVERYDAY

Caroline Bonne Muller



MUL0357-B

JEHANE Ltd

EVERYDAY

Bex Parkin



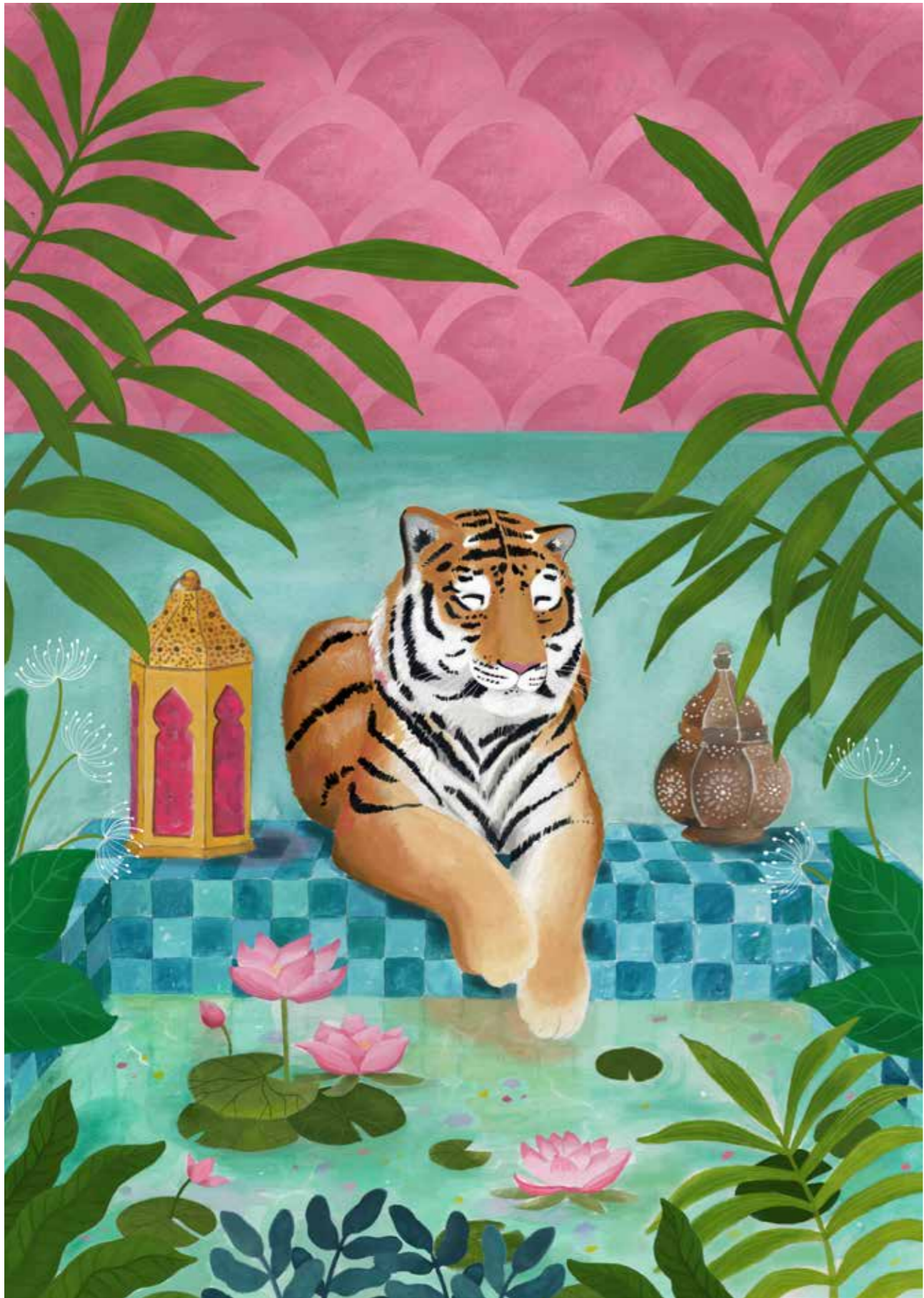
PAR0243

+44 7703 185413 • studio@jehane.com • www.jehane.com

NEW

EVERYDAY

Bex Parkin



PAR0263



PAR0229-C

NEW

EVERYDAY

Meghann Rader



RAD0163



RAD0154



RAD0155



RAD0156



RAD0157



RAD0158



RAD0159



RAD0160



RAD0161



RAD0162

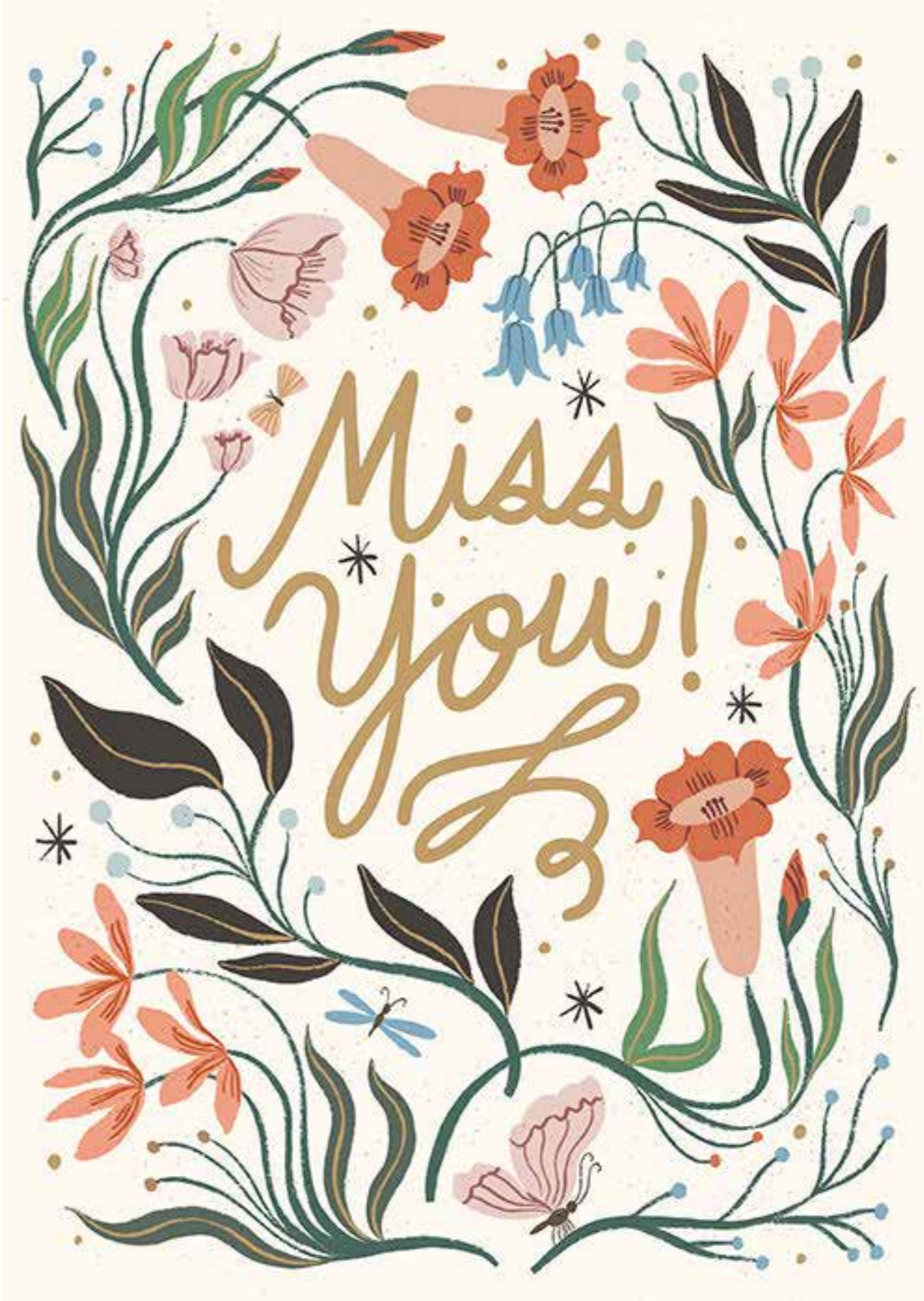
NEW

EVERYDAY

Meghann Rader



RAD0167



RAD0169



QUN0500



QUN0497



QUN0498



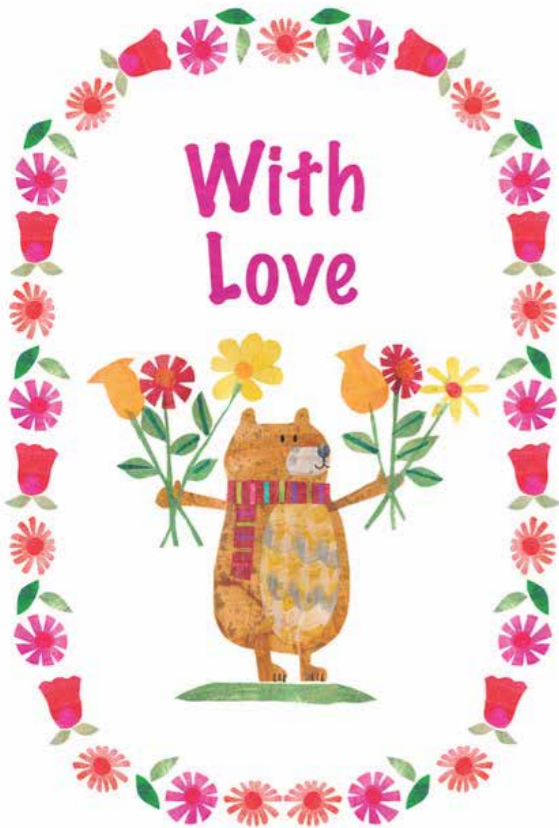
ENG0355



ENG0356



ENG0362



ENG0357



ENG0358



ENG0360



ENG0361



ENG0359



ENG0363



ENG0365



ENG0364

NEW

EVERYDAY

Tracey English



ENG0382

CHINESE NEW YEAR

Tracey English



ENG0380



ENG0381

NEW

CHRISTMAS

Amelia Bowman



BOW0131-A



BOW0132-A

CHRISTMAS

Ali Brookes



BRK0199



BRK0200



BRK0201



BRK0202

NEW

Licensed for cards exclusive USA.

CHRISTMAS

Ali Brookes



BRK0204-A



BRK0204-B

JEHANE Ltd

CHRISTMAS

Tracey English



ENG0377

+44 7703 185413 • studio@jehane.com • www.jehane.com



MUL0246-A



MUL0233-A



MUL0264-B



MUL0233-D

NEW

CHRISTMAS

Caroline Bonne Muller



MUL0161-B



MUL0163-A



MUL0468

CHRISTMAS

Katherine Quinn



QUN0491



QUN0492



QUN0493

NEW

CHRISTMAS

Katherine Quinn



QUN0502

CHRISTMAS

Meghann Rader



RAD0165



RAD0168



QUN0503



RAD0166



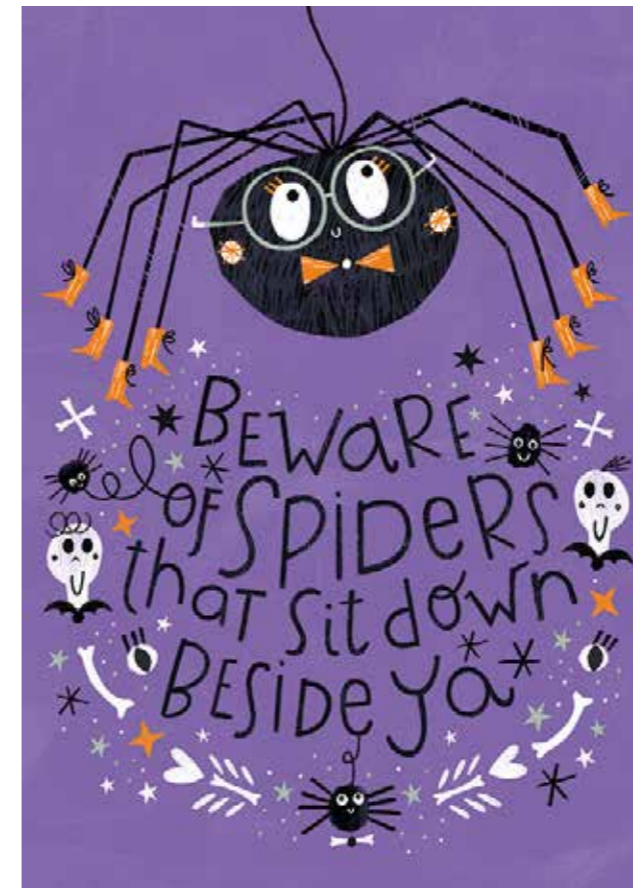
Happy Halloween by Ali Brookes

BRK0185

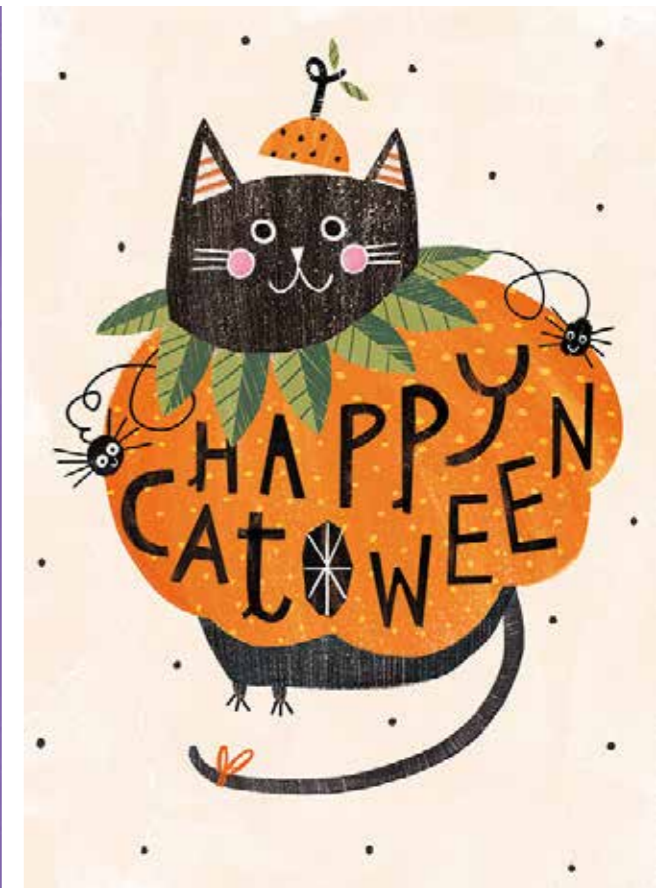


Happy Halloween by Ali Brookes

BRK0186



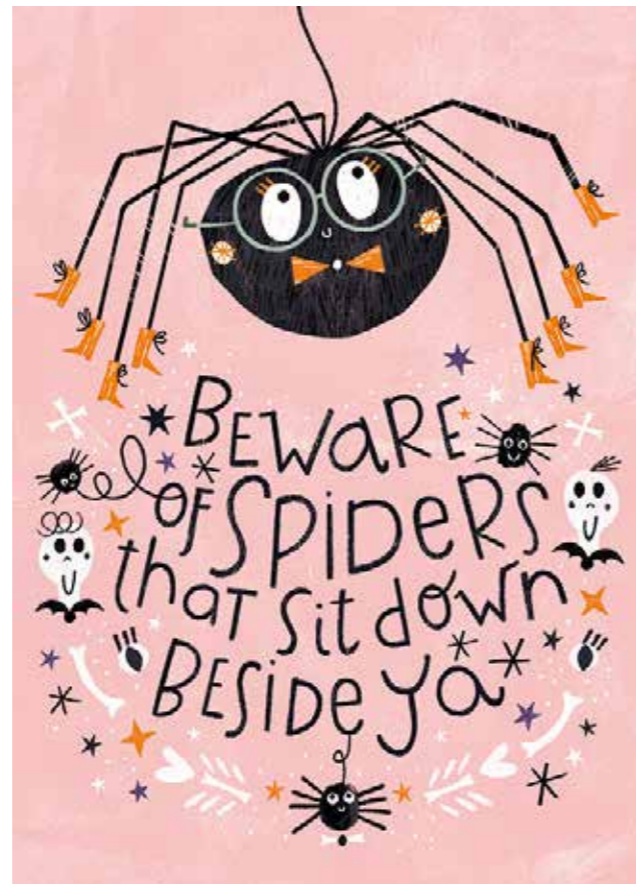
BRK0188-B



BRK0189



BRK0187



BRK0188-A



BRK0190



BRK0191



BRK0192 - Licensed for cards exclusive USA



BRK0193



BRK0197-A



BRK0196



BRK0195



BRK0197-B



BRK0194

NEW

HALLOWEEN

Ali Brookes



BRK0198-A



BRK0198-C



BRK0198-B

NEW

Licensed for cards exclusive UK
non-exclusive rest of the world.

Licensed for cards exclusive UK
non-exclusive rest of the world.

EVERYDAY

Helen Ahpornsiri



AHP0254-B



AHP0255-C



AHP0286



AHP0287



AHP0285



AHP0285-B



AHP0288



AHP0288

NEW

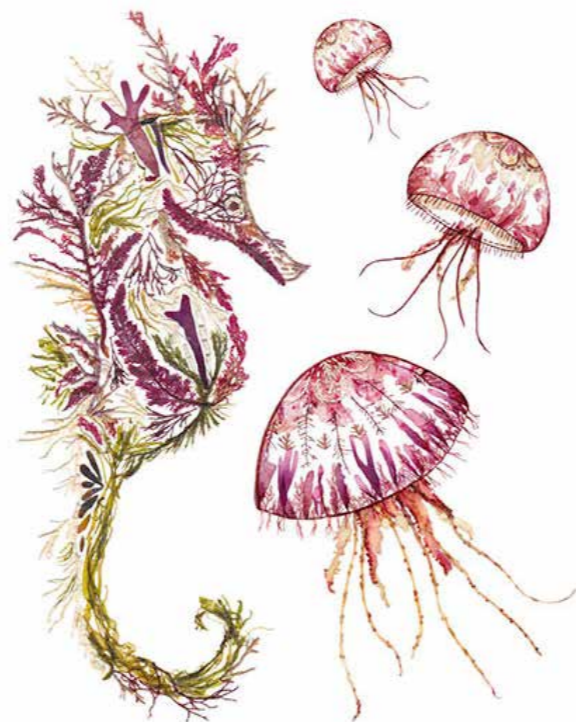
Licensed for cards exclusive UK
non-exclusive rest of the world.

EVERYDAY

Helen Ahpornsiri



AHP0289



AHP0293



AHP0291



AHP0291-B

Licensed for cards exclusive UK
non-exclusive rest of the world.

EVERYDAY

Amelia Bowman



BOW0094-G

NEW

Licensed for cards exclusive UK
non-exclusive rest of the world.

Licensed for cards exclusive UK
non-exclusive rest of the world.

EVERYDAY

Catherine Rowe



RWE0200



RWE0200-B



RWE0201



RWE0201-B



RWE0202-B



RWE0202



RWE0203

NEW

Licensed for cards exclusive UK
non-exclusive rest of the world.



RWE0206

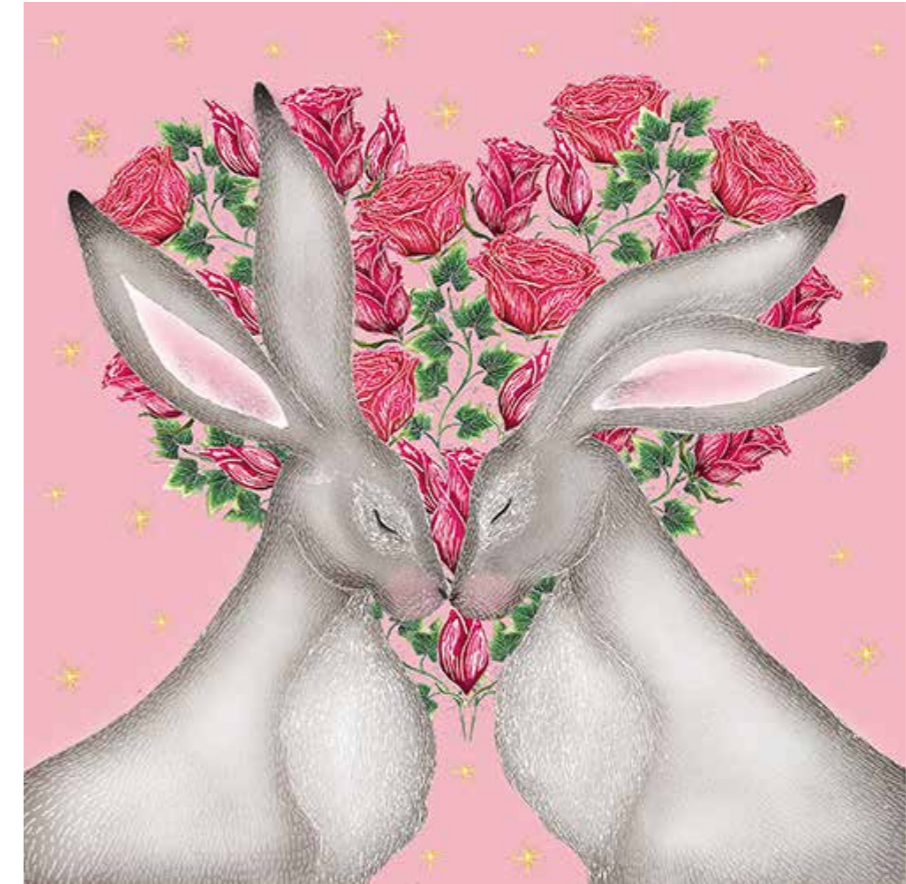


RWE0208

Licensed for cards exclusive UK
non-exclusive rest of the world.

EVERYDAY

Catherine Rowe



RWE0207-A



RWE0207-B

NEW

Licensed for cards exclusive UK
non-exclusive rest of the world.



RWE0205-A

Licensed for cards exclusive UK
non-exclusive rest of the world.

CHRISTMAS

Catherine Rowe



RWE0205-C

NEW

Licensed for cards worldwide.



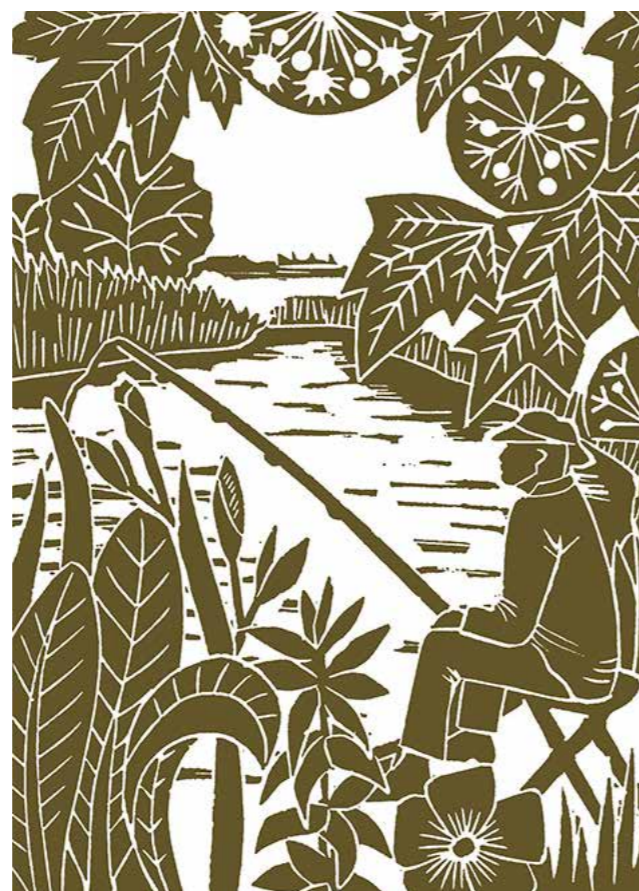
HEI0107-B



HEI0240



HEI0241



HEI0242

Licensed for cards worldwide.

EVERYDAY

Kate Heiss



HEI0256



HEI0257

NEW

Licensed for cards worldwide.



PAR0212

JEHANE Ltd

Licensed for cards exclusive in USA.

EVERYDAY

Bex Parkin



PAR0262

+44 7703 185413 • studio@jehane.com • www.jehane.com

NEW

Style Guide only

EVERYDAY

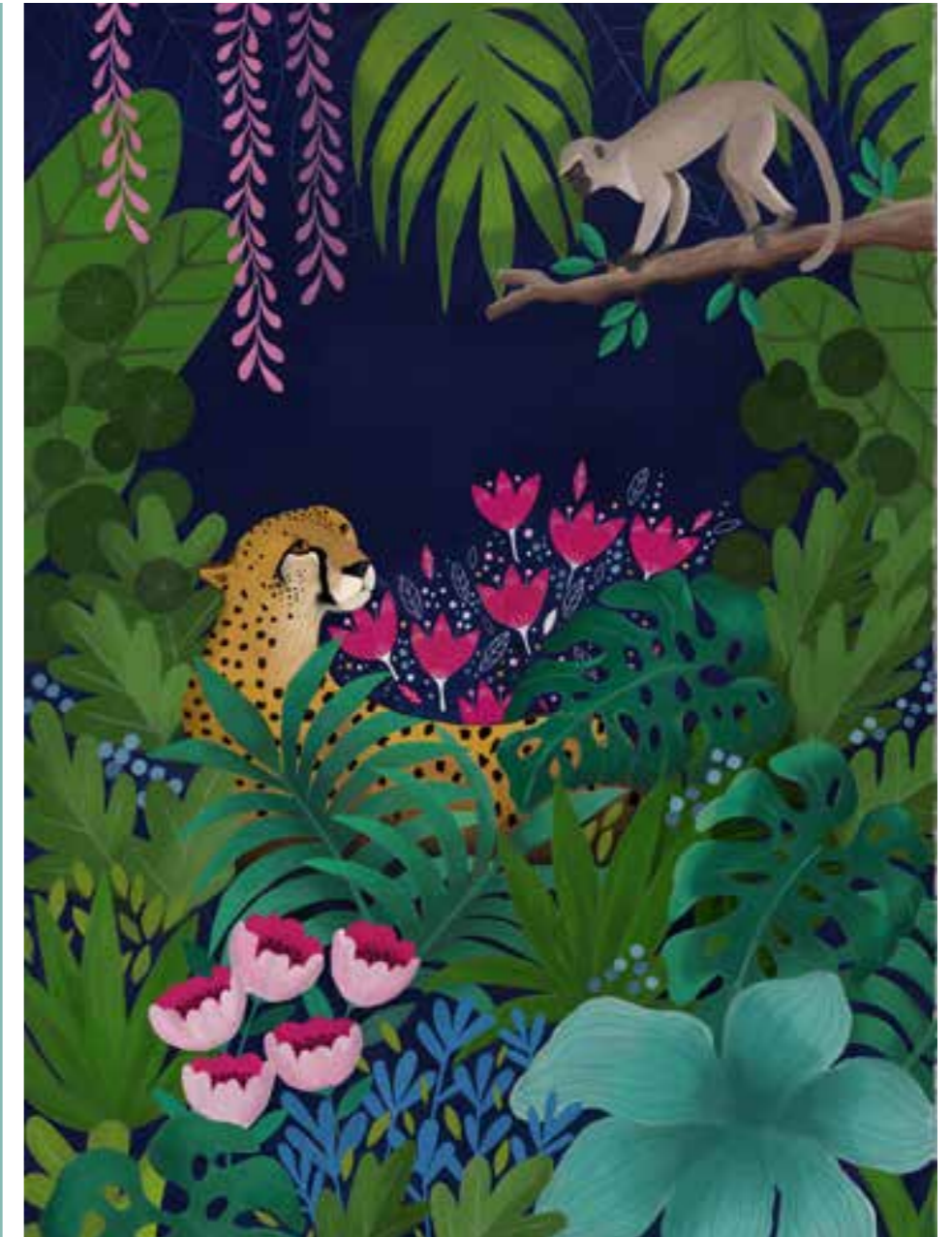
Bex Parkin



PAR0258



PAR0259



PAR0260

Our Clients Include:



Thank you.

Please contact Jehane for more information on **+44 7703 185413** or at **studio@jehane.com**. Alternatively, for more examples of our artists' work, click here to visit **www.jehane.com**.

